

---

*Comfort-Aire*®

 **Century**®

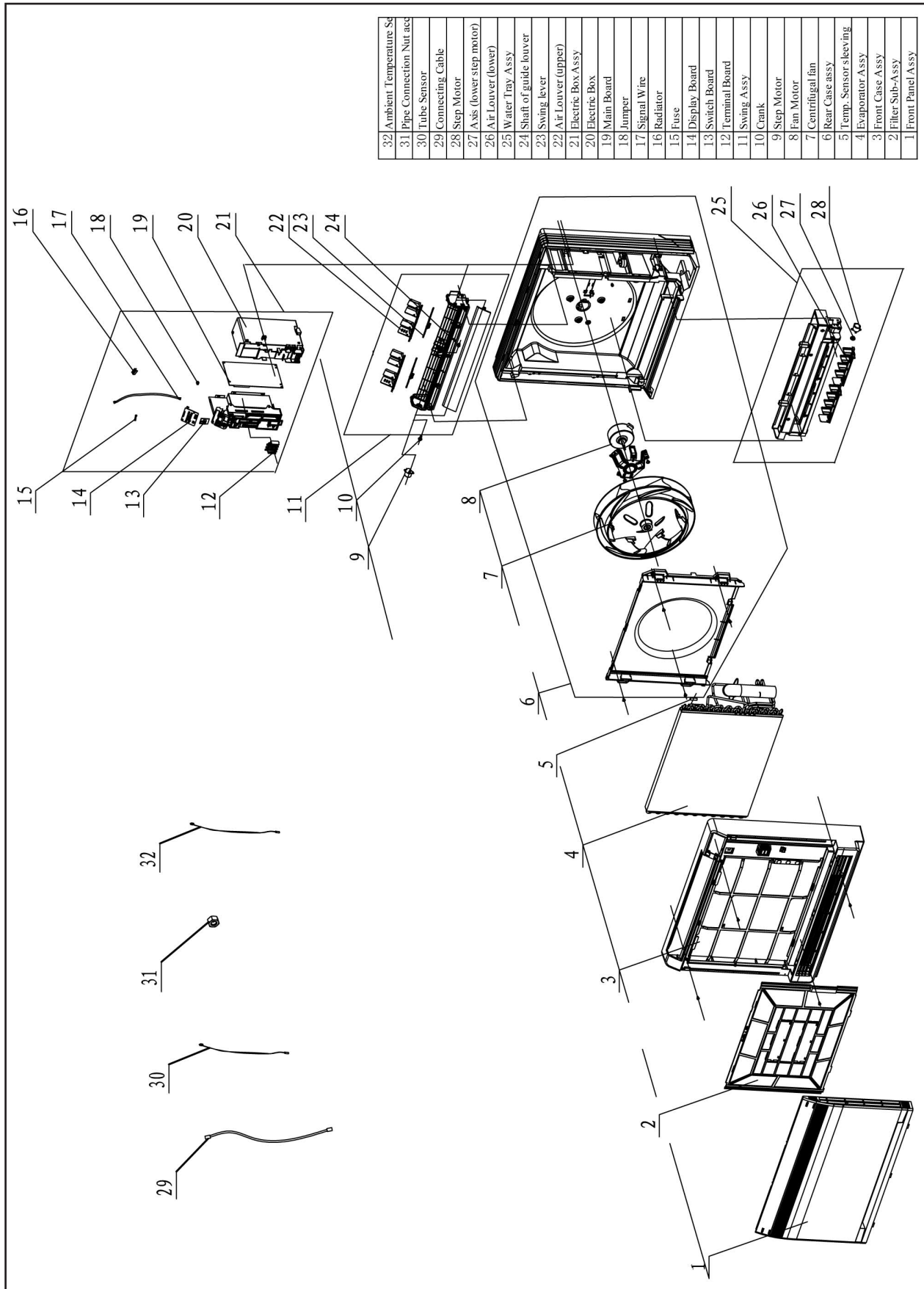
**MARS**®  
— Delivering Confidence

---

REPLACEMENT PARTS LIST

**InverterFlex Series®**  
**Floor Console Mini-Split**  
B-VFH18FA-1  
**Heat Pumps**

# EXPLODED VIEW



32	Ambient Temperature Se
31	Pipe Connection Nut acc
30	Tube Sensor
29	Connecting Cable
28	Step Motor
27	Axis (lower step motor)
26	Air Louver (lower)
25	Water Tray Assy
24	Shaft of guide louver
23	Swing lever
22	Air Louver (upper)
21	Electric Box Assy
20	Electric Box
19	Main Board
18	Jumper
17	Signal Wire
16	Radiator
15	Fuse
14	Display Board
13	Switch Board
12	Terminal Board
11	Swing Assy
10	Crank
9	Step Motor
8	Fan Motor
7	Centrifugal fan
6	Rear Case Assy
5	Temp. Sensor sleeve
4	Evaporator Assy
3	Front Case Assy
2	Filter Sub-Assy
1	Front Panel Assy

## REPLACEMENT PARTS

Location	Part Name	Quantity	Part No.
1	Front Panel Assy	1	20012756_L08294
2	Filter Sub-Assy	1	11122139
3	Front Case Assy	1	20012601
4	Evaporator Assy	1	01002332
5	Temp Sensor Slewing	1	05212423
6	Rear Case assy	1	22202462
7	Centrifugal Fan	1	10312005
8	Fan Motor	1	15012123
9	Stepping Motor	1	1521210805
10	Crank	1	73012005
12	Terminal Board	1	42011233
13	Switch Board	1	30112007
14	Display Board	1	30568131
15	Fuse	1	46010055
16	Radiator	1	49010252
17	Signal Wire	1	4003004202
18	Jumper	1	4202300103
19	Main Board	1	30138613
20	Electric Box	1	20112116
21	Electric Box Assy	1	2020242301
22	Air Louver (upper)	2	10512143
23	Swing Lever	2	10582096
24	Shaft of Guide Louver	2	10542020
25	Water Tray Assy	1	20182141
26	Air Louver (lower)	2	10512144
27	Axis (lower step motor)	1	10542034
28	Stepping Motor	1	1521210101
30	Temperature Sensor	1	390000591
32	Temperature Sensor	1	3900004508
	Remote Control	1	30510135
	Mounting Hook	1	02112019

---

Due to ongoing product improvements, specifications and dimensions are subject to change and correction without notice or incurring obligations. Determining the application and suitability for use of any product is the responsibility of the installer. Additionally, the installer is responsible for verifying dimensional data on the actual product prior to beginning any installation preparations.

Incentive and rebate programs have precise requirements as to product performance and certification. All products meet applicable regulations in effect on date of manufacture; however, certifications are not necessarily granted for the life of a product. Therefore, it is the responsibility of the applicant to determine whether a specific model qualifies for these incentive/rebate programs.

*Comfort-Aire*®  **Century**®

1900 Wellworth Ave., Jackson, MI 49203 • Ph. 517-787-2100 • [www.marsdelivers.com](http://www.marsdelivers.com)

